

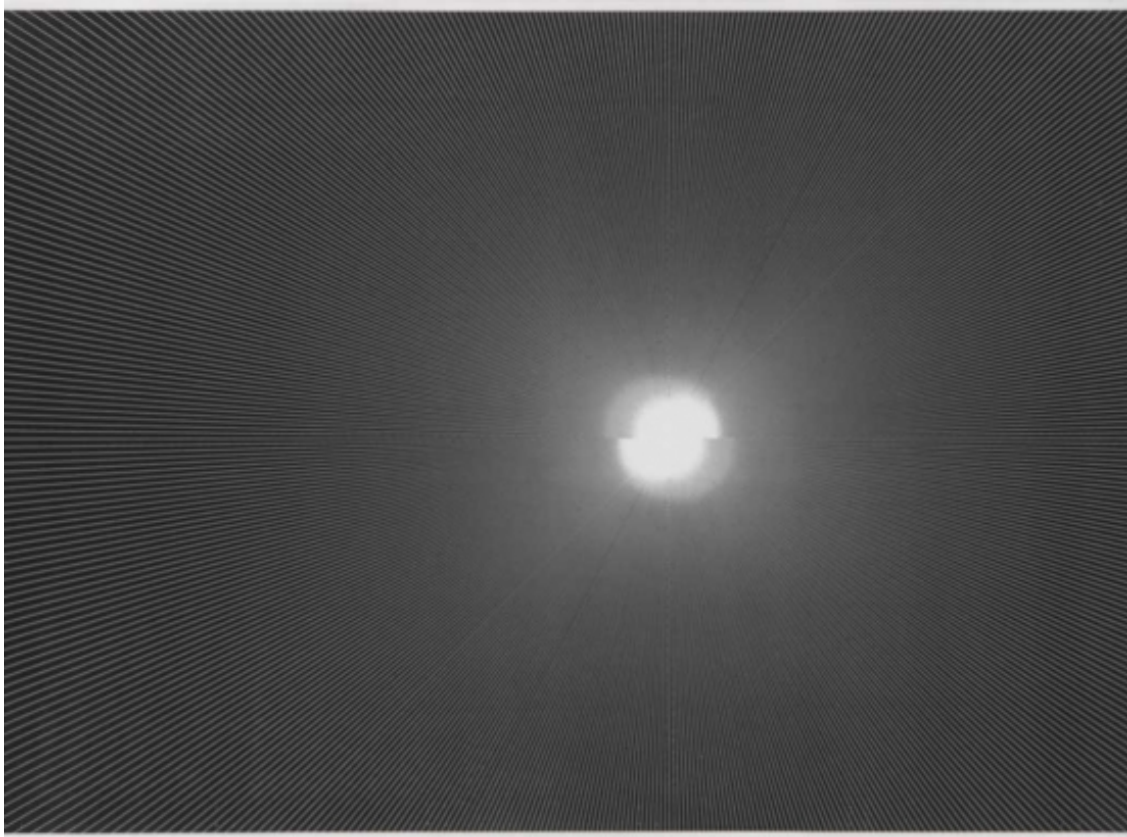
Art in America

Published April 2, 2015 | THE LOOKOUT

MARSHA COTTRELL

at Eleven Rivington, through Apr. 5

11 Rivington Street and 195 Chrystie Street



While working in production at a magazine in the late '90s, Marsha Cottrell, then a painter, experimented with laser printers and the thick, powdery toner they use as material. Cottrell's printed toner-on-paper works fill both of Eleven Rivington's Lower East Side spaces. On Chrystie Street are three series: "Aperture" (images that look like computer monitors or windows), "Interior" (seemingly empty rooms made by slightly altering a geometric image file and printing repeatedly on the same sheet of paper) and "Spectral Sun" (eye-bending abstractions punctured by off-center orbs). The Rivington Street space shows a constellation of ten drawings on handmade paper or mylar, as well as a large-scale work made up of 142 sheets of letter-size paper, all printed solid black except for one sheet in the center marked by a circular void.